



Para-Rowing Classification Policy

November 2020

Developed in consultation with

Paralympics Australia | State and Territory Rowing Associations | Rowing Australia Endorsed Classifiers

CONTENTS

Rowing Australia Classification System Overview	Page: 3
Stakeholders in the Classification Policy and their Roles	Page: 3
Who this Policy applies to	Page: 4
Purpose of this Policy	Page: 4
Classification Policy	Page: 4
Appendix A – Classification Pathway	Page: 7
Appendix B – National Sport Class	Page: 8
Appendix C – National Sport Class Status	Page: 9

ROWING AUSTRALIA CLASSIFICATION SYSTEM OVERVIEW

The Rowing Australia (RA) Classification System provides a structure for competition for rowers with a physical, vision or intellectual impairment. Classification groups athletes according to the impact of their impairment on their ability to compete in the sport of rowing. The purpose of classification is to provide a structure for competition, to ensure an athlete's Impairment is relevant to sport performance and that the athlete competes equitably with other athletes.

RA will promote and support the implementation of this policy through the maintenance of relationships with Classification System Partners and Stakeholders, development of strategy to drive continued improvement of classification systems, development of resources and information that educate the rowing community about classification system eligibility requirements and the athlete evaluation process.

STAKEHOLDERS IN THE CLASSIFICATION POLICY AND THEIR ROLES

The Board of Rowing Australia

Endorsement of the Classification Policy.

National Classification System Partners

Rowing Australia recognises the following National Impairment Sports Organisations with a responsibility for the management of classification in Australia:

Paralympics Australia (PA)

PA is the peak body in Australia representing Paralympic Sport. As the National Paralympic Committee (NPC) and signatory to the International Paralympic Committee (IPC) Classification Code and International Standards (2015), PA is ultimately responsible for all Paralympic classification processes and procedures occurring within Australia. Paralympic classification systems for rowers include athletes with a physical and/or visual.

Sport Inclusion Australia (SIA)

SIA is the peak body in Australia representing the needs of athletes with intellectual impairment. SIA is responsible for managing the national eligibility process for athletes wishing to compete within an intellectual impairment classification. SIA is the Australian Member organisation of the Virtus: World Intellectual Impairment Sport (Virtus). Virtus manages and oversees international eligibility for athletes with an intellectual impairment.

State and Territory Rowing Associations

The State and Territory Rowing Associations govern the sport of rowing in their State or Territory. The associations assist in the periodic review of the Classification Policy and govern the classification requirements at State and Territory level. They facilitate

and ensure access to classification services and information for members and non-members in State and Territory competition pathways.

Rowing Administrators

Rowing administrators from clubs, State and Territory associations provide the direct link for information relating to implementing the Classification Policy and processes.

Classifiers

These qualified individuals are responsible for the Athlete Evaluation process and determine eligibility of athletes within their respective classification systems. RA only recognises classifications where athletes are assessed by individuals accredited or endorsed by the relevant Classification System Partners.

- Physical Impairment
 - Rowing Australia
- Vision Impairment
 - Paralympics Australia
- Intellectual Impairment
 - Virtus: World Intellectual Impairment Sport (Virtus)
 - Sport Inclusion Australia (SIA)

WHO THIS POLICY APPLIES TO

This policy applies to all rowers in Australia with a physical, vision or intellectual impairment who intend to compete in events where rowing classification is required.

PURPOSE OF THIS POLICY

The purpose of this Classification Policy is to clearly define the systems of classification adopted by RA and recognise the role of system partners. It ensures a nationally consistent and sustainable classification system for Australia.

The policy may be amended from time to time by the resolution of RA's Board of Directors.

CLASSIFICATION POLICY

1. All Australian rowers with a physical, visual or intellectual impairment should have access to classification opportunities appropriate to their level of competition (Appendix A).
2. As the National Sports Organisation responsible for rowing in Australia, RA accepts its role in ensuring rowing classification is conducted in accordance with national and international standards.

- 2.1. RA adopts and adheres to the [2017 FISA Rule Book, Appendix 19 Para-Rowing Classification](#).
 - 2.2. RA acknowledges the [IPC Classification Code and International Standards 2015](#)
 - 2.3. RA acknowledges the [PA Classification Policy](#) and agrees to cooperate with the APC in delivery of classification services under the terms of that policy.
 - 2.4. RA adopts and adheres to the [SIA Eligibility Policy](#) where it relates to national competition and agrees to cooperate with SIA in delivery of classification services under the terms of that policy.
3. Sport Class
 - 3.1. All athletes are allocated a Sport Class which groups athletes according to the way their impairment limits his/her functional ability for rowing (Appendix B).
4. Sport Class Status
 - 4.1. All athletes are allocated a Sport Class Status which indicates conditions of a rowers classification (Appendix C).
5. Rowers with Multiple Classifications
 - 5.1. Rowers with more than one impairment type may be eligible for multiple classifications. Rowers must meet the eligibility criteria for each relevant classification system.
 - 5.2. In competition, rowers may only compete with one classification. This classification must be nominated when entering the event and may not change throughout the event.
6. Rowing Outside Assigned Sport Class
 - 6.1. Rowers may compete in a more functional sport class than their assigned sport class, but not a less functional sport class. For example, a rower classified as a PR2 may compete in PR3 events, but may not compete in PR1 events.
7. National Rowing Classification Master List
 - 7.1. RA manages the official Master List of athlete classification details. RA is responsible for making this public and providing certain classification information (name, state, date of birth, classification and status) to relevant parties such as the state rowing associations, the PA or sport organisations for the effective conduct of competitions.
8. International Classification
 - 8.1. RA will identify and endorse athletes at its discretion to seek International Classification.
 - 8.2. RA in cooperation with FISA will manage all aspects of the International Classification process for identified Australian athletes.
9. Protests
 - 9.1. Any athlete and/or their support personnel following completion of the Athlete Evaluation and allocation of Sport Class may protest the result.
 - 9.2. An athlete and/or support personnel may not protest another athlete's Sport Class.

- 9.3. An athlete's Sport Class may be protested within 24 hours of the time the Sport Class confirmation email is sent to the athlete.
- 9.4. All protests incur a \$100 fee which will be refunded only if the protest is upheld.
- 9.5. The decision of the Protest Panel is final and is not subject to any further protest.

10. Protests in Exceptional Circumstances

- 10.1. The Head of Classification may make a protest in exceptional circumstances in respect of any athlete at any time during or prior to a competition in accordance with the Para-Rowing Classification Regulations and By-Laws.

11. Appeals

- 11.1. Any athlete and/or their support personnel following completion of the Athlete Evaluation can make a formal objection to the manner in which classification procedures have been conducted.
- 11.2. An athlete and/or support personnel may not appeal another athlete's classification procedure.
- 11.3. Appeals must be submitted in written form to RA on the same day as the decision being appealed.
- 11.4. All appeals incur a \$100 non-refundable fee.
- 11.5. The decision given under this rule is final.

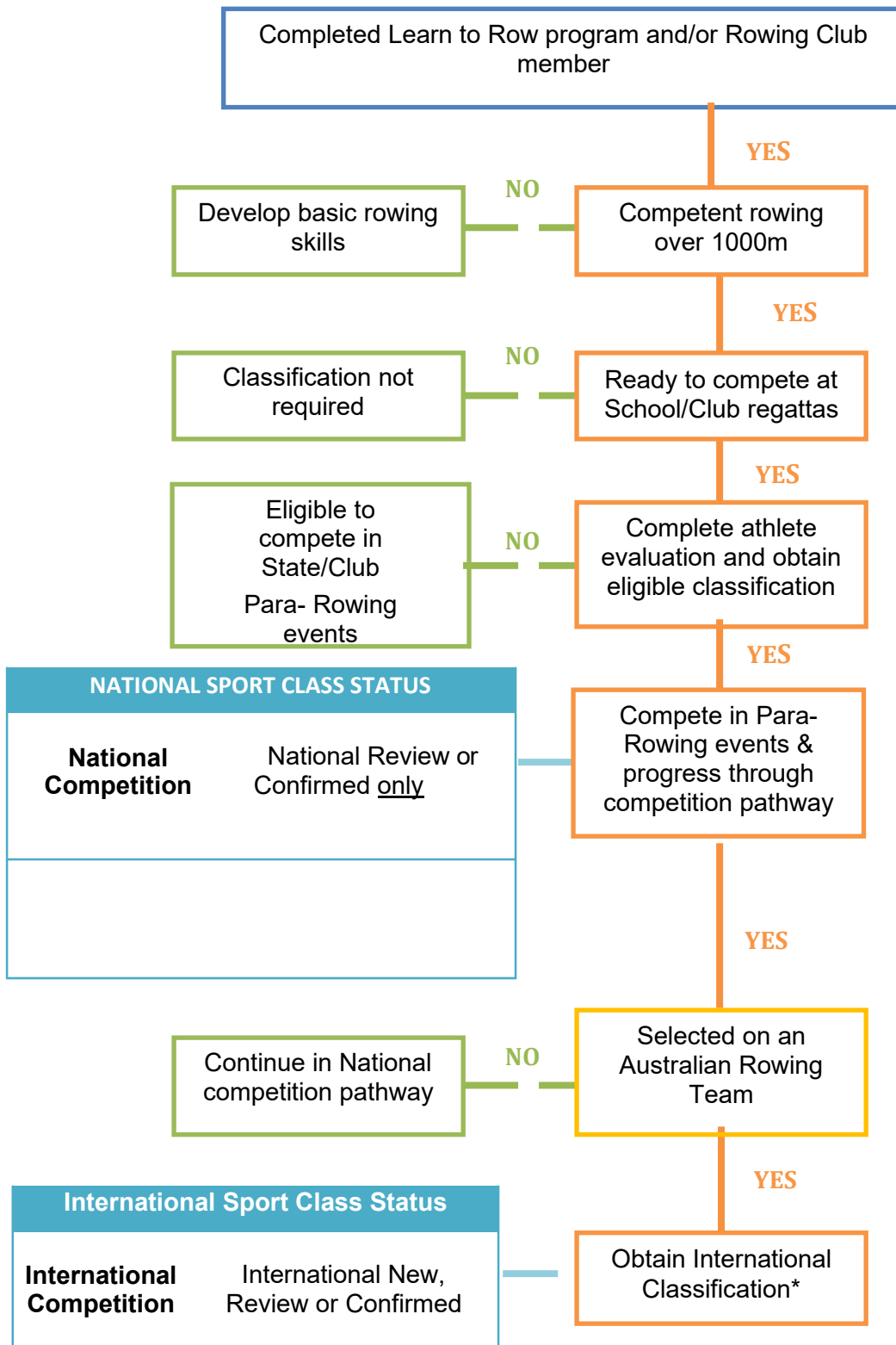
12. Protests and Appeals Resolution Process

- 12.1. RA will facilitate the resolution of protests and appeals relating to classification outcome and/or evaluation process in consultation with Classification System Partners and in accordance with the relevant Classification Policy and the Para-Rowing Classification Regulations and By-Laws described in this policy.
- 12.2. All protests and appeals directed to RA will be treated as confidential. Parties to the protest or appeal shall not disclose information relating to the matter or the proceedings to any person or entity outside those directly required to assist in the resolution which may include but is not limited to:
 - Rower and their appointed representative(s)
 - RA Head Classifier
 - Certified Classifiers
 - RA Employees
 - Classification System Partner Representative(s)
 - Sport, medical or scientific consultations engaged for the purpose of the dispute resolution
 - Legal counsel

13. Additional Information

- Rowing Australia Para-Rowing Classification Regulations and By-Laws
- [FISA Para-Rowing Classification Regulations – Appendix 19](#)
- [Rowing Australia Privacy Policy](#)

APPENDIX A – CLASSIFICATION PATHWAY



*RA manages the process and will endorse identified athletes to undertake international classification

APPENDIX B – NATIONAL SPORT CLASS

Sport Class	Minimum Impairment
PR3	<p><u>Physical Impairment</u> The minimum physical impairment is a full loss of three fingers on one hand, OR at least a tarsal metatarsal amputation of the foot, OR the loss of ten points on one limb or fifteen points across two limbs when assessed using the <i>Functional Classification Test</i> as set out in the Classification Application Form for Physical Impairments.</p> <p>For the PR3Mix2x boat class, rowers must have a minimum impairment of a loss of at least 20 points in one limb when assessed using the <i>Functional Classification Test</i> as set out in the Classification Application Form for Physical Impairments.</p> <p>Minimum impairment equivalent to one of the following:</p> <ul style="list-style-type: none"> - Amputee - Neurological Impairment equivalent to incomplete lesion at S1 - Cerebral Palsy Class 8 (CPISRA) <p><u>Vision Impairment</u> 10% of vision in best eye with best correction (from visual acuity above 2/60 up to visual acuity of 6/60 and/or a visual field of more than 5% and less than 20%).</p>
PR2	<p>Minimum impairment equivalent to at least one of the following:</p> <ul style="list-style-type: none"> - Bilateral around knee amputation, or significantly impaired quadriceps, or - Neurological impairment equivalent to a complete lesion at L3 level, or an incomplete lesion at L1, or - Combination of the above such as one leg with around knee amputation and one leg with significant quadriceps impairment; or - Classification by the international sports federation for rowers with cerebral palsy (CPISRA) as eligible to be in CP Class5.
PR1	<p>Minimum impairment equivalent to at least one of the following:</p> <ul style="list-style-type: none"> - Cerebral Palsy Class 4 (CP-ISRA); or - Neurological Impairment with a complete lesion at T12 level, or an incomplete lesion at T10
PR3 (II) (Intellectual Impairment)	<p>Be registered with Virtus: World Intellectual Impairment Sport (Virtus) and have completed the athlete's classification application using the form on the Virtus website (www.virtus.sport) and have been issued a Virtus Athletes Card, or</p> <p>Have a current SIA registration. This can be obtained by completing and submitting the form on the SIA website (sportinclusion.org.au) to SIA and being issued with an SIA card.</p>
NE (Not Eligible)	<p>Rowers who have undergone the RA Classification Process and have not met the minimum impairment to be eligible to compete as a para-rower at national competition.</p>

APPENDIX C – NATIONAL SPORT CLASS STATUS

Sport Class Status	Applicable Classes	Level of Competition	Athlete Evaluation Process	Conditions
National Provisional (NPr)	PR3-PI PR2, PR1	Club/School State	<p><u>Physical Impairment</u> Has not been evaluated by a full RA National Classification Panel, but has been classified by an RA National Medical Classifier who is not the Athlete's own coach and who is not from the Athlete's own club, or an RA National Technical Classifier who is not the Athlete's own coach and who is not from the Athlete's own club.</p>	<ul style="list-style-type: none"> - Provides an indication of class only - Valid for 12 months only - Not eligible to compete at RA National events
National Review (NR)	PR3 - PI, PR3 - VI B1, PR3 - VI B2, PR3 - VI B3, PR3 - II, PR2, PR1	Club/School State National	<p><u>Physical Impairment</u> Has been evaluated by a full RA National Classification Panel, none of whom are the Athlete's own coach or from the Athlete's own rowing club.</p> <p><u>Vision Impairment</u> Has been evaluated by a PA endorsed Vision Impairment classifier.</p> <p><u>Intellectual Impairment</u> Has registered with Virtus and been issued a Virtus Athlete card or registered with SIA and been issued with an SIA card.</p>	<ul style="list-style-type: none"> - Classification panel may allocate a review period - Rower is required to undergo athlete evaluation again in the future in situations such as: <ul style="list-style-type: none"> • Fluctuating and/or progressive impairment • Athlete has not reached physical maturation • Athlete has sustained their impairment less than 2 years previously - Rowers cannot be reviewed by a classification panel until their allocated review date, unless the classification rules change, or in other exceptional circumstances.
National Confirmed (NC)	PR3 - PI, PR3 - VI B1, PR3 - VI B2, PR3 - VI B3, PR3 - II, PR2, PR1	Club/School State National	<p><u>Physical Impairment</u> Has been evaluated by a full RA National Classification Panel, none of whom are the athlete's own coach or from the Athlete's own rowing club.</p> <p><u>Vision Impairment</u> Has been evaluated by a PA endorsed Vision Impairment classifier.</p> <p><u>Intellectual Impairment</u> Has registered with Virtus and been issued an Virtus Athlete card or registered with SIA and been issued with an SIA card.</p>	<ul style="list-style-type: none"> - Rower cannot be reviewed by a classification panel again, unless classification rules change, or in other exceptional circumstances.